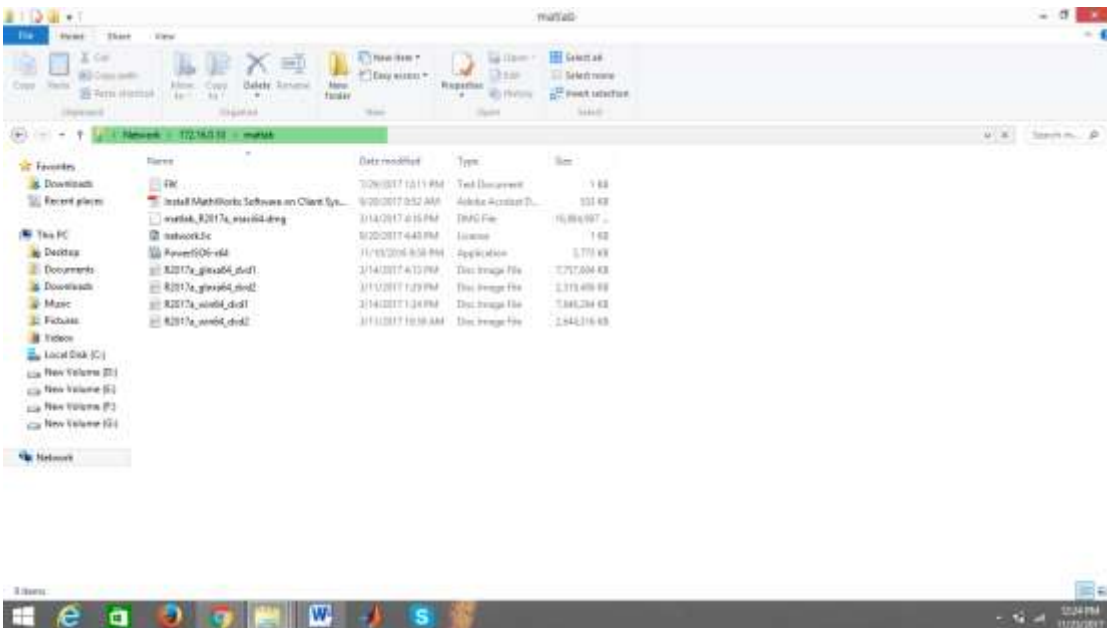


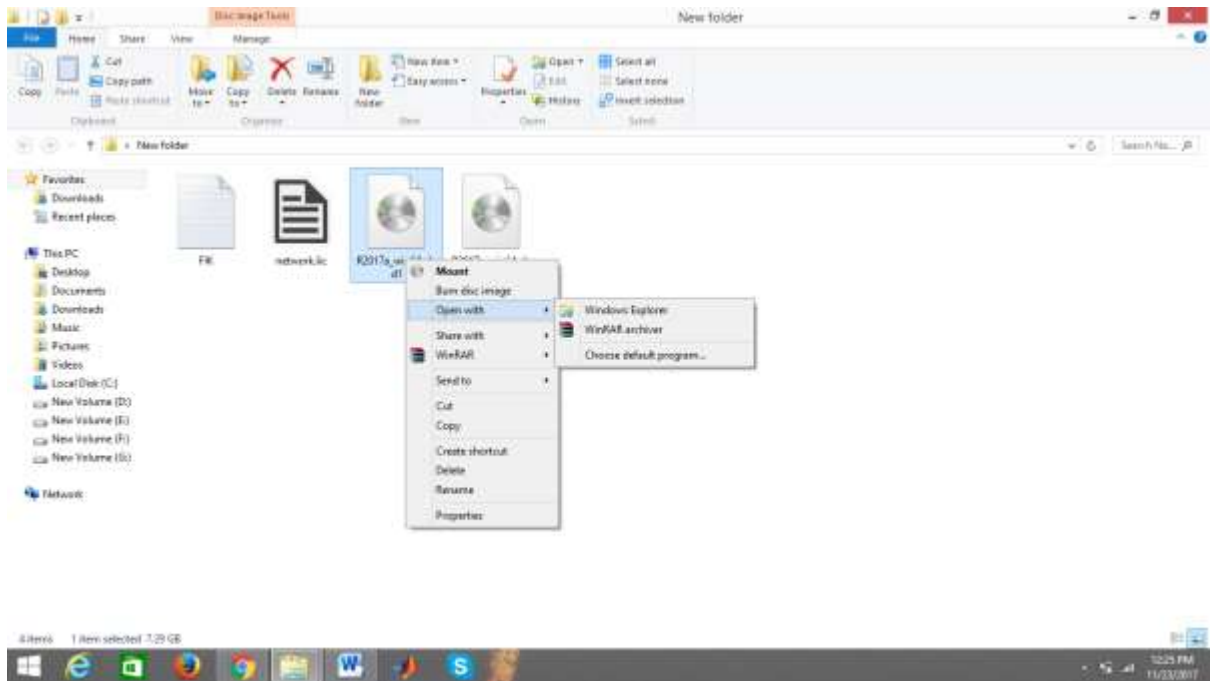
- 1) Setup can be taken from server by typing [\\172.16.0.10](http://172.16.0.10)



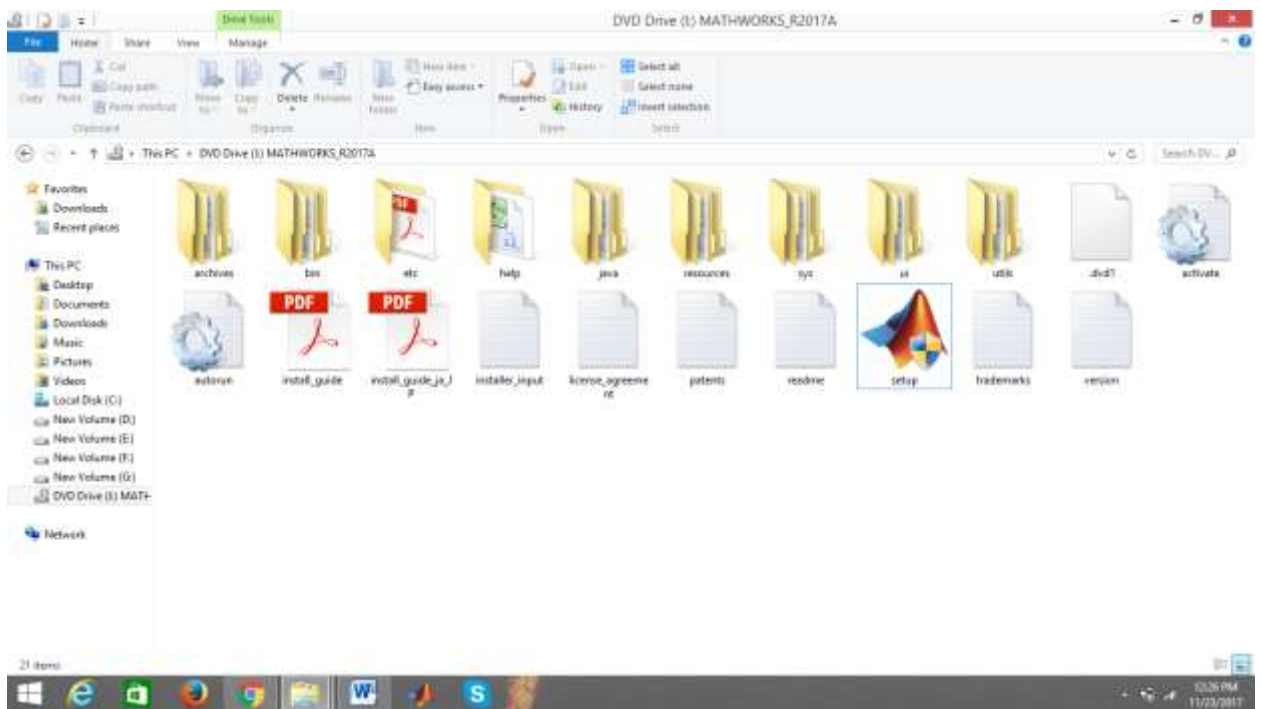
- 2) Copy FIK ,network.lic,win64dvd1.iso and win64dvd2.iso (for windows)  
Copy FIK , network.lic, glnxdvd1.iso and glnxdvd2.iso (for linux )  
Copy FIK , network.lic,maci64.dmg(for mac)  
For window 7 user, mount option is not available hence install powerISO6\_x64. After installation go to file and mount ISO file.



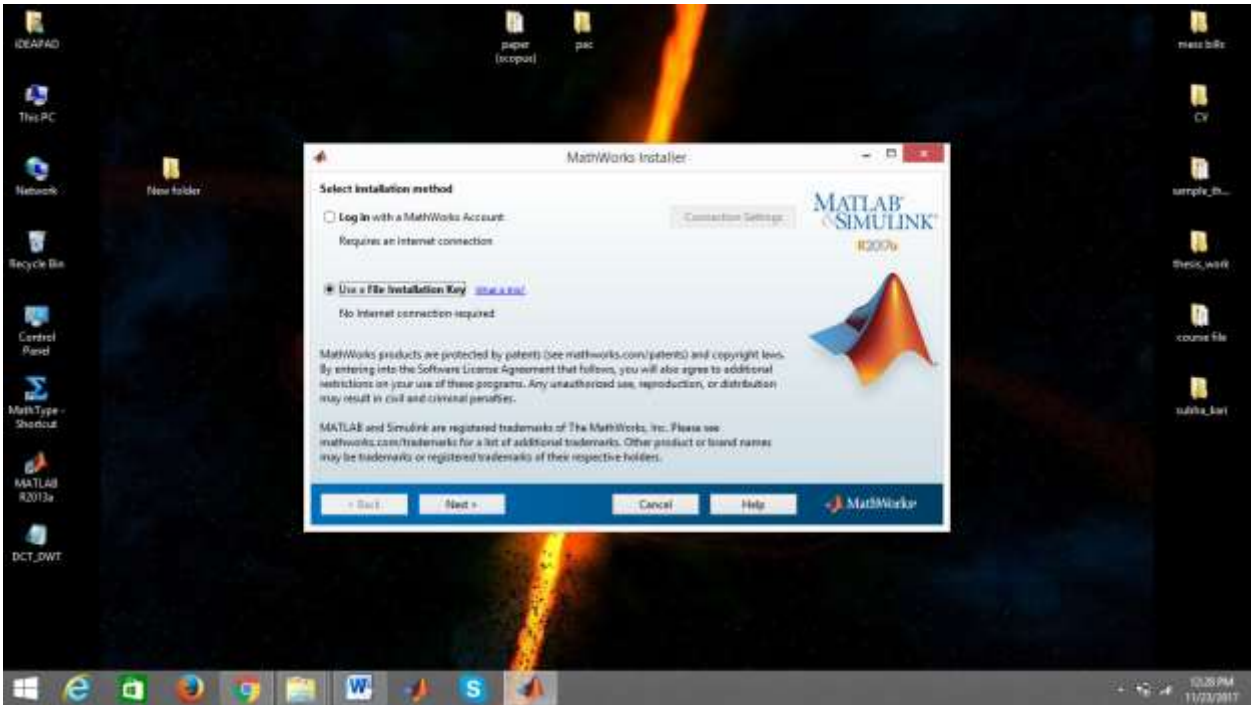
- 3) Right click on dvd1 and open with window explore (or you can directly mount with mount option)



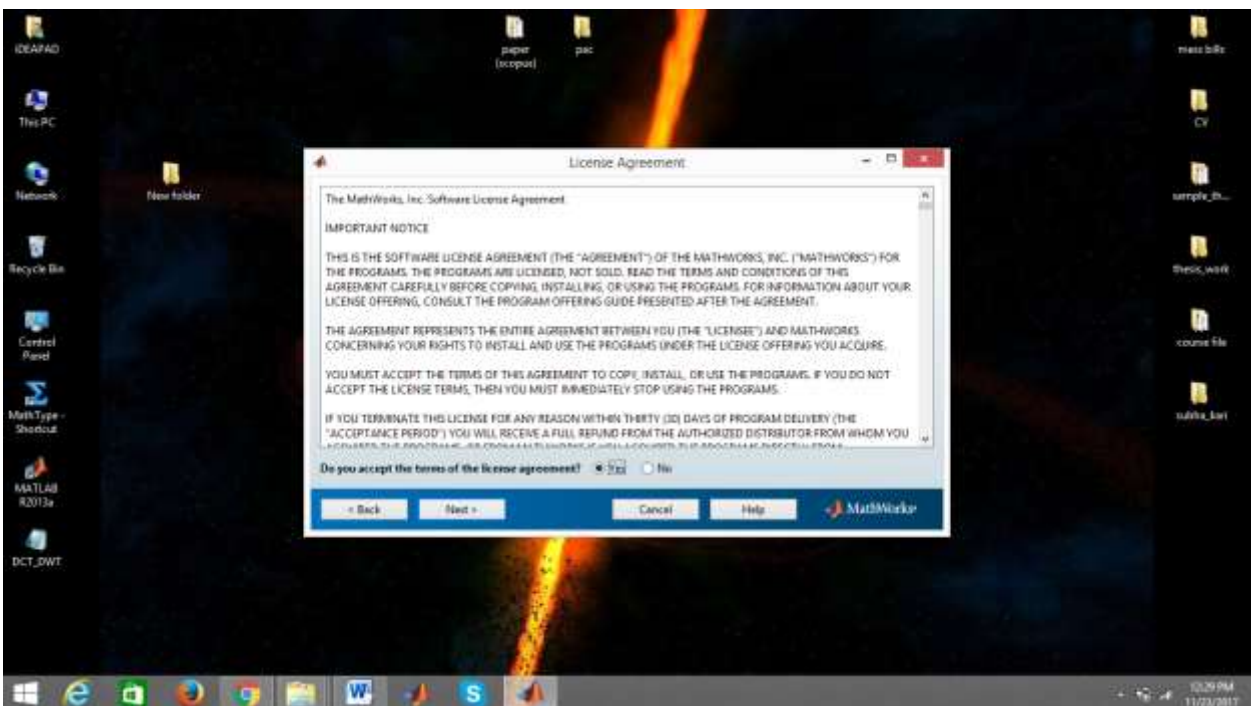
4) Run the setup



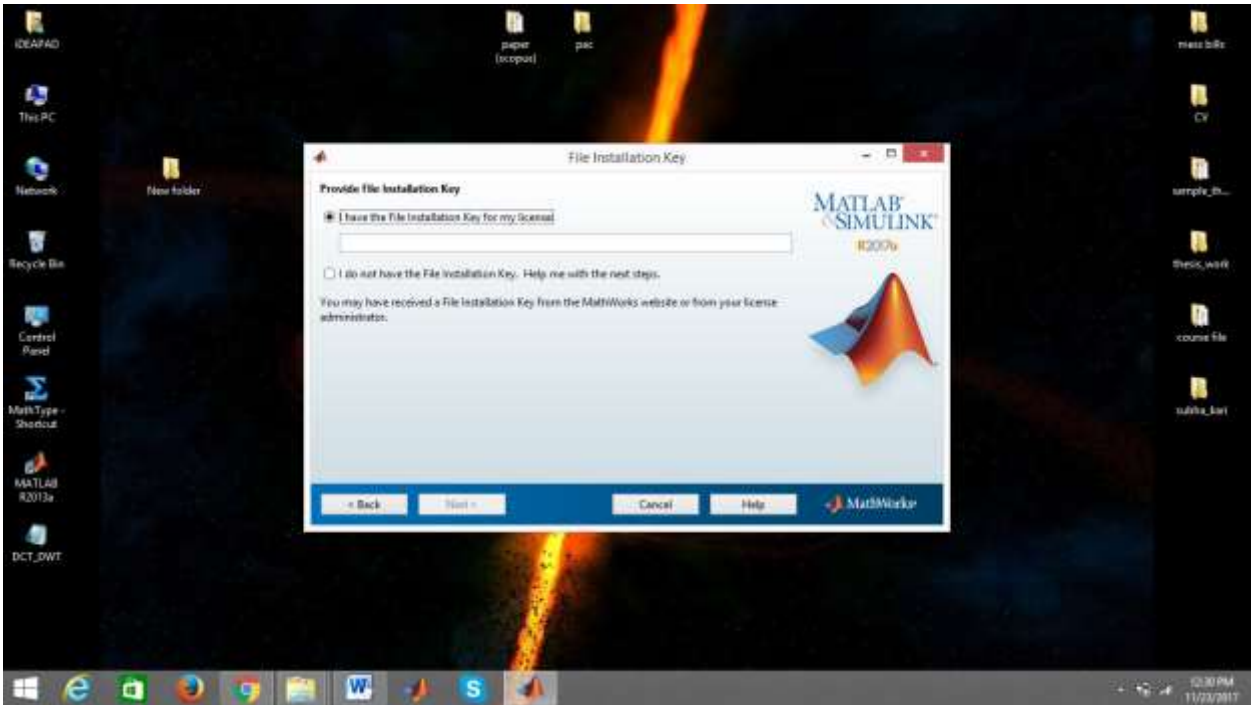
5) Choose the second option and click on next.



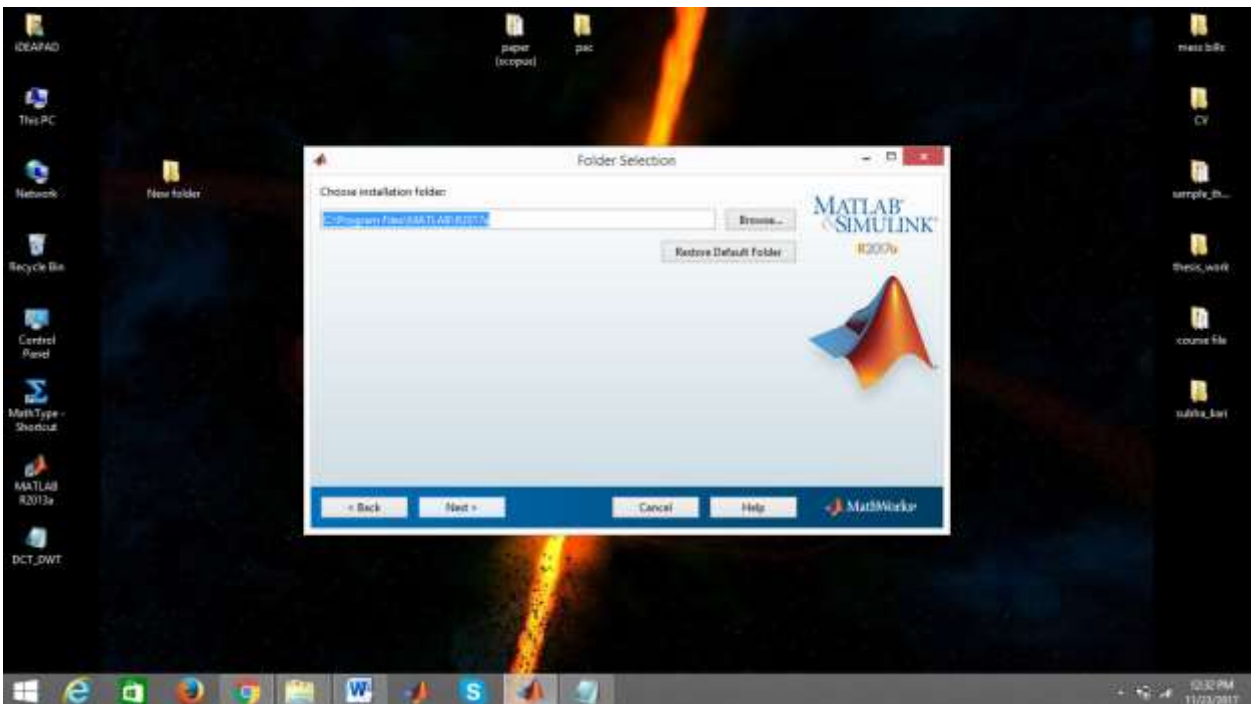
6) Click on yes and proceed.



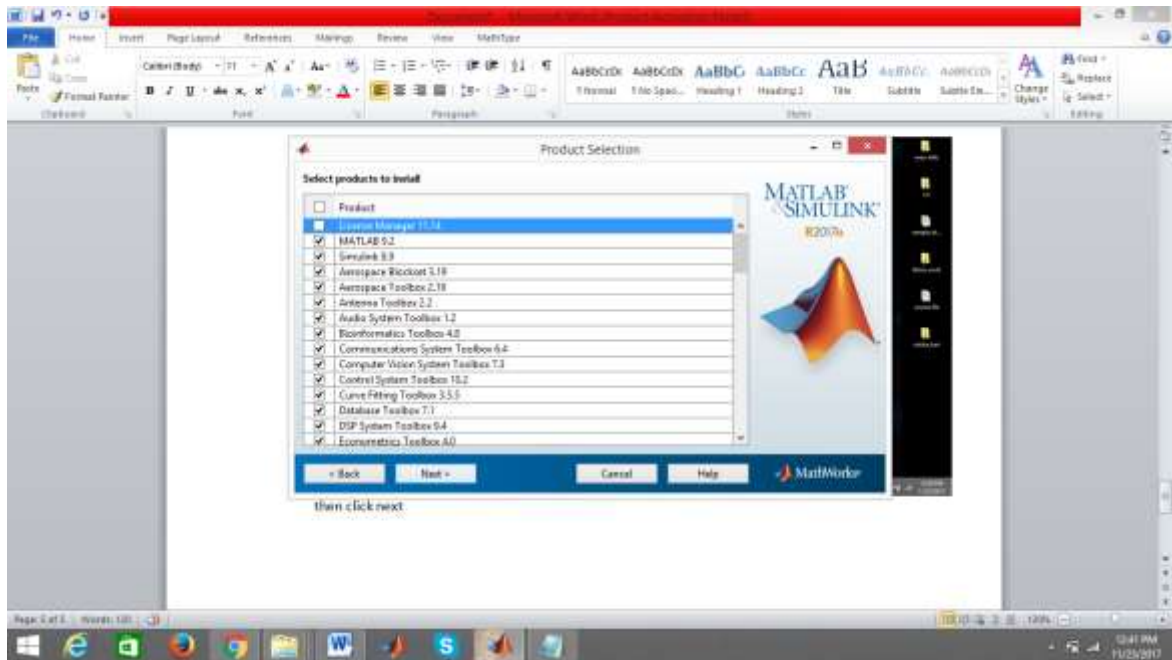
7) Put the FIK by copying it from the installed setup.



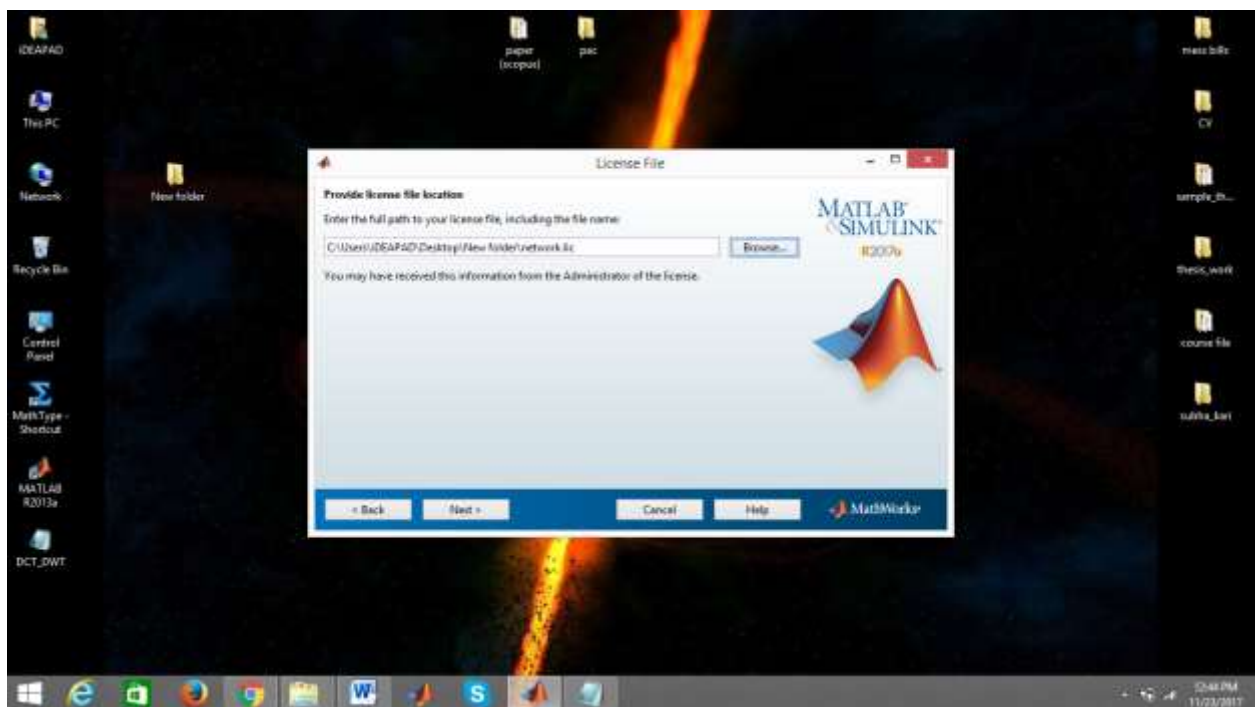
8) By default the program will be installed in C drive or it can be changed accordingly.



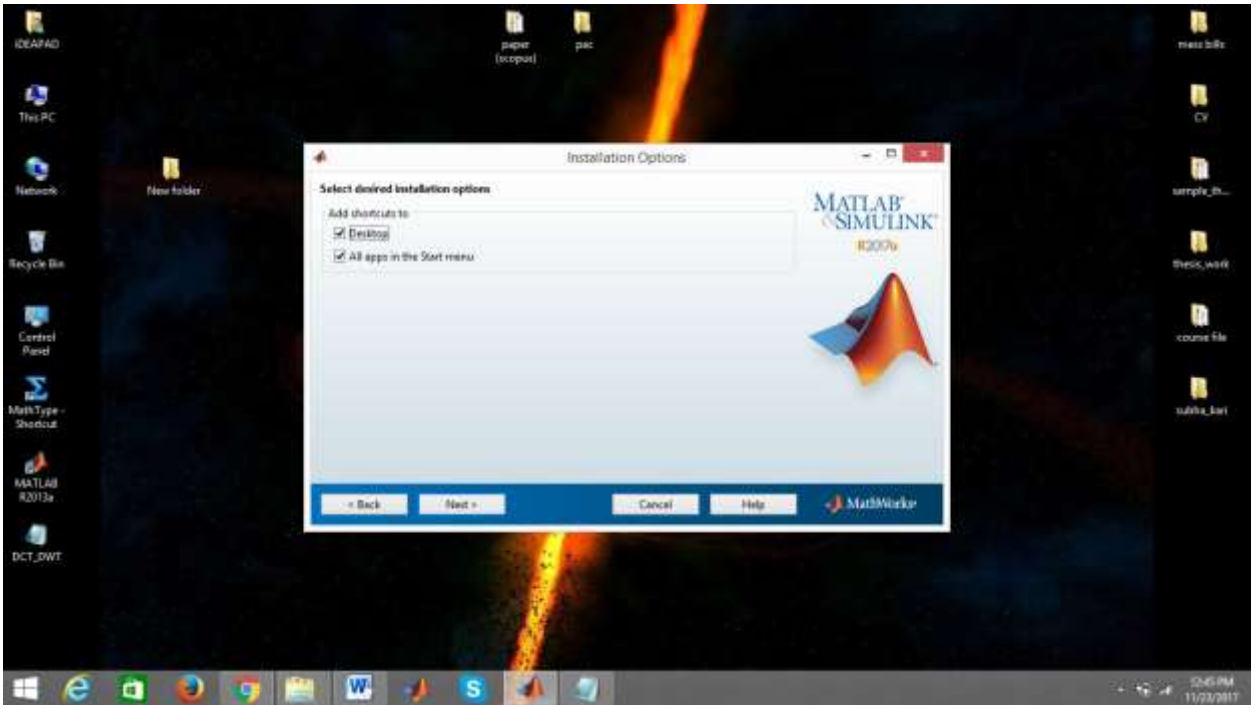
9) Then click next. License manager must be unchecked before proceeding



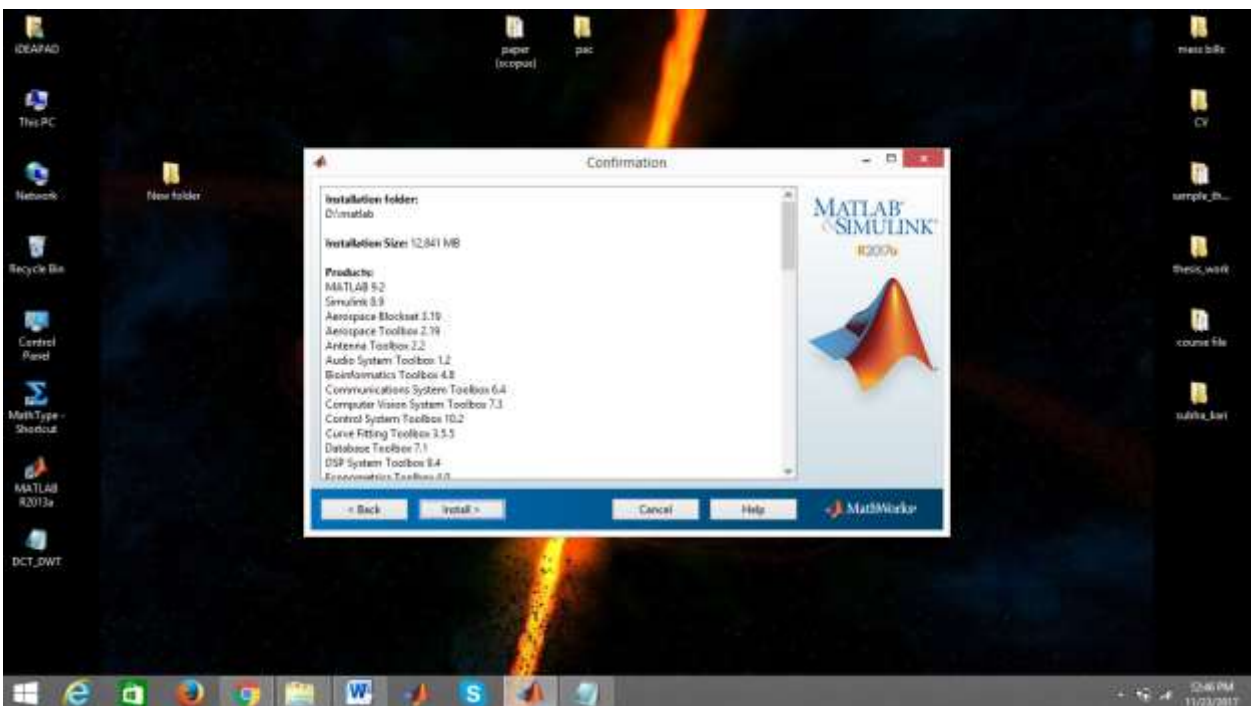
10) Click on browse and select the path of network.lic and click next.



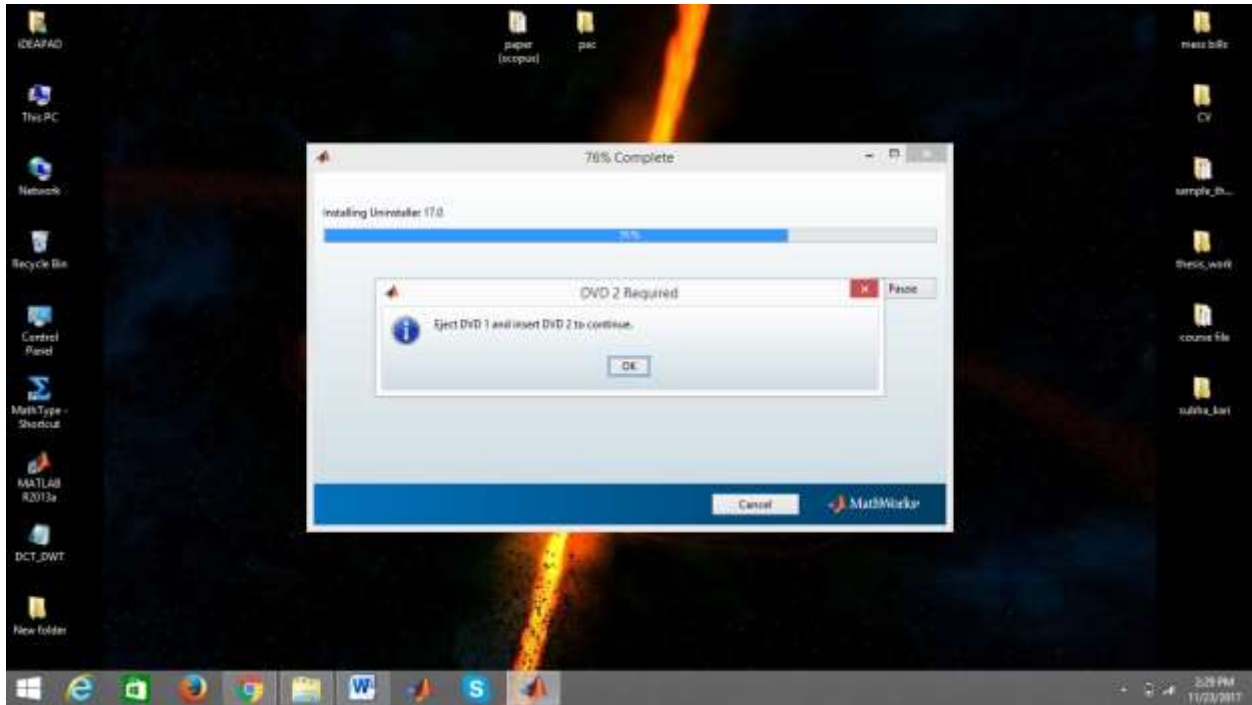
11) To make the shortcut click on desktop and click next.



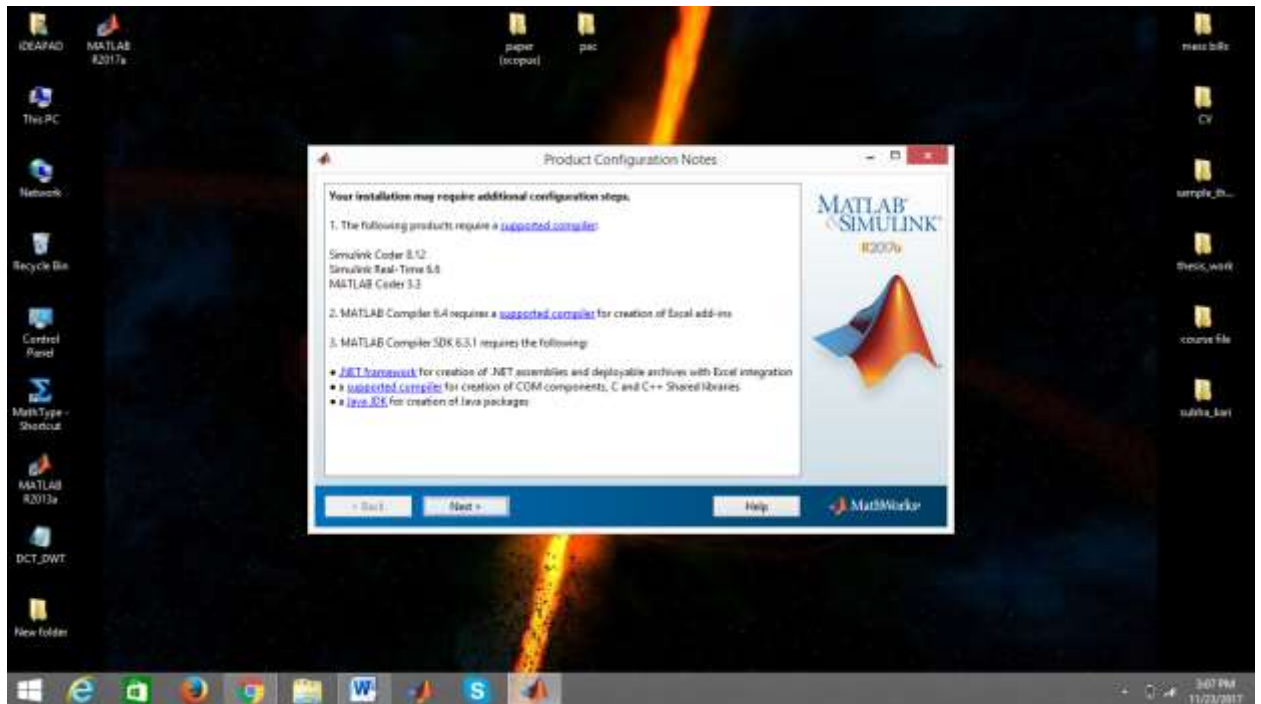
12) Click on install



13) After around the 76% completion of installation, eject dvd1 from the driver (which can be done by opening my computer ) and after that click on dvd2 and mount this in the same driver and click on ok.



14) Click on next.



15) Click on finish and use Matlab.